

APS GROUP





Story of APS ...

The venture has started as a small family business of knit apparel manufacturing in 1999 and since then has evolved into a rapidly growing conglomerate. APS Group considers itself as an end-to-end apparel solution provider, starting from sourcing the cotton and going all the way to providing material support to satisfy clients' petition which is “ready-made garments”.

The company itself now functions with over 100 leaders and over 6,000 skilled workers. With a vertically integrated setup, the incorporation of advanced technology and a proficient management team, APS is emerging sturdily as one of the anterior business entities in the country. Looking ahead, APS is focusing more towards the front-end of the chain: the end customer. Besides, APS mostly focus on strategic verdict making process which has bought distinct competitive advantage that made APS diverse within the industry.

APS has blended the dedication and skills of its' workforce to accelerate the venture. These are the people with the best talents, commitments, and expertise with the blend of experience and enthusiasm. They work



GROUP

Center of
Functional
Dedication!

APS

Discourse to APS

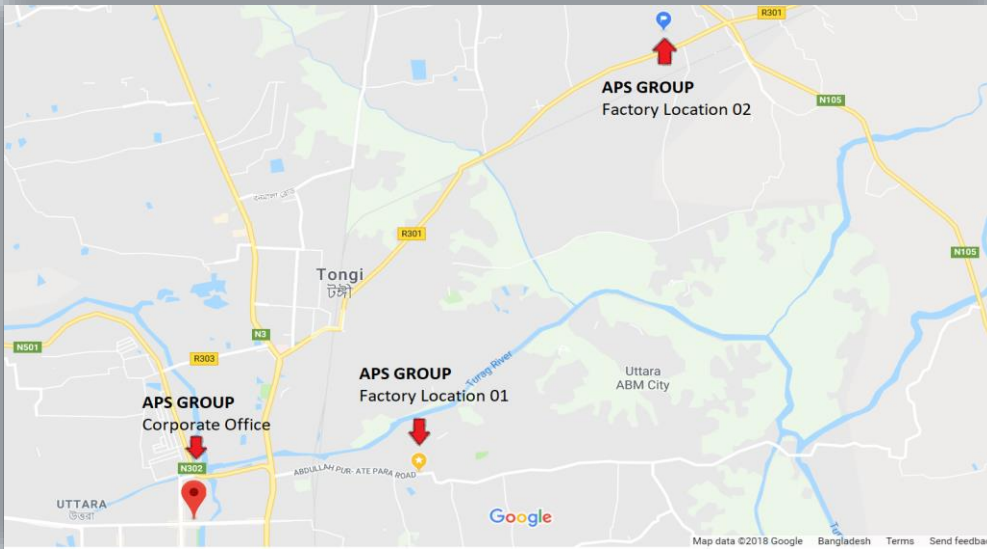


Corporate Office

Khan Tower (8,9,10 & 11th Floor);
Holding # 14 & 16; Sonargaon Janapath Road;
Sector-11; Dhaka-1230; Bangladesh.

BUSINESS Concerns

APS Apparels Limited
APS Clothing Limited
APS Design Works Limited
APS Holdings Limited
APS Apparels (Dyeing Unit) Ltd.
APS Knit Composite Ltd.
APS Fashion Wear Limited
APS Paper Works Limited



Factory Location # 01

106, Baitur Rahmat Jame Mosque Road;
Atipara; Dhaka-1230; Bangladesh.

Factory Location # 02

Kamar gaon; Pubail Road;
Gazipur; Bangladesh.

Breadth of APS



*APS has initiated to expand its' sewing capacity up to **24 sewing line** with new location capacity at once. Brining dimension to existing product category, APS is adding lingerie item to its' production gallery with this new capacity!*

Factory Location # 03

Tusher Tower, Vill # Nawjor, P.O # Kadda Bazar,
Thana # Basan, Gazipur Bangladesh.

MISSION

A world class
knitwear
manufacturer!

VISION

Being a
sustainable
industry
trailblazer!

VALUES



TEAMWORK

We not me, so we
can be our best



RESPECT

Be open & honest with opinion

INTEGRITY

Mean what you
say, say what you
mean



RECOGNITION

Say thank you

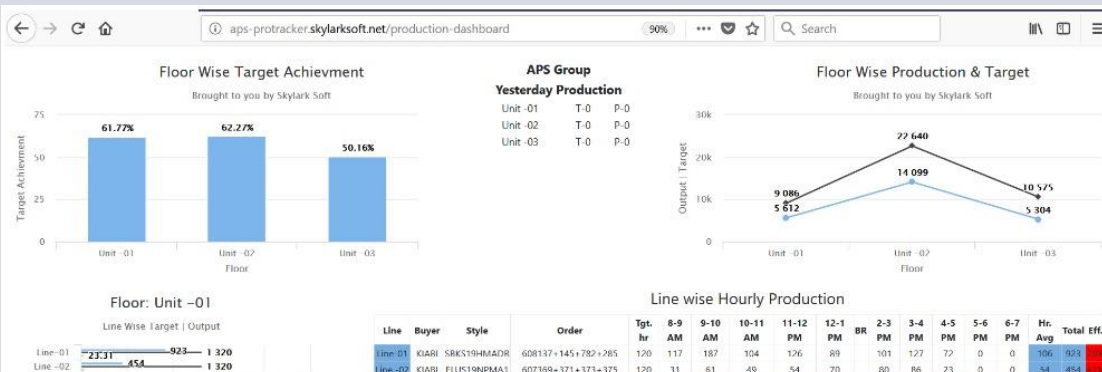


SAFETY

A safe you is a
safe me

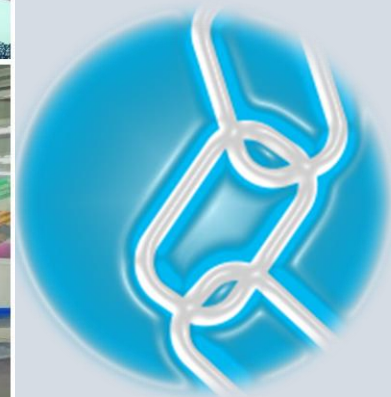


...WE ARE FAMILY...



Our Strength

- Technological Advancement
- Latest Machineries
- Skilled Labor



Business Partners

KIABI

LINDEX



H&M



cache **C** cache



BRÉAL

ICA



Products



1. Sleep Wear (Male, Female & Kids)
2. Casual Knitwear (Basic T-shirt, Polo shirt, Tanktop, Jogger, Hooded Jacket)
3. Fashionable Wear (Ladies wear)
4. Under Garments



Production house details

FLOOR	SPACE (SQUARE FEET)	WORKSTATIONS
BASEMENT FLOOR	8,000	Fabric Store
	5,000	Accessories & General Store
GROUND FLOOR	13,000	Doctor's Room/Medical Center, Child Day-care, Sub-station, HR Office, 4 Inspection Rooms, GM (Prod) Room, Pilot Line, Parking.
MEZZANINE FLOOR	8,000	Finished Goods & Fabric Store
1ST, 2ND, 3RD & 4TH FLOOR	13,000 x 4 = 52,000	Sewing & Finishing Floor
5TH FLOOR	13,000	Office & Cutting Area
6TH FLOOR	13,000	Sample Section, CAD Room, Kitchen & Cutting Area, Garden
7TH FLOOR	8,000	Prayer Room, Worker Dinning, Lab & Store
TOTAL AREA FOR SEWING, FINISHING & OTHERS: 1,20,000SQFT.		
LOCATION 01		

Embedded Features

24/7 First aid & other necessary medical assistance for staffs and workers.

No child labor is employed in the factory.

Factories are strictly regulated with Govt. labor law & BGMEA rules.

Supply of fresh & pure drinking water.

Adequate space and spear rooms along with healthy sanitation facilities.

There are two wide stair cases in each floor of the factory building along with another emergency stair.

Online Order Tracking System @ www.aps-group.org

Production house details

FLOOR	SPACE (SQUARE FEET)	WORKSTATIONS
1ST FLOOR	21,138	Office, CAD Room, Buyers inspection Room Store (Finished Fabric & Gray Fabric)
2ND FLOOR	21,138	8/16 Line Sewing unit with manual Cutting & Finishing.
3RD FLOOR	21,138	Auto Cutting Section, Sewing unit with Finishing.
4TH FLOOR	21,138	Auto Cutting Section, Sewing unit with Finishing.
5TH FLOOR	21,138	Worker Dining, Canteen, Prayer Room (Male & Female), Store (Accessories & Finished Goods), Sample Room.
TOTAL AREA FOR SEWING, FINISHING & OTHERS: 21138 X 5= 105690 SFT.		
LOCATION 02, BUILDING 01		
BUILDING 02		Child Care Room, Medical Centre
BUILDING 03	2,00,000	Dyeing, Finishing, Utility, Waste Water Treatment Plant (ETP), Knitting & Cartoon Factory

Machine Setup (Sewing)

SL NO	MACHINE TYPE	BRAND	QUANTITY			Total
			2nd floor (8/16 Lines)	3rd floor (14 Lines)	4th floor (8/16 Lines)	
1	OVER LOCK	PEGUSUS	70	90	110	270
2	SN MACHINE (Plain mc)	BROTHER	129	89	120	338
3	2N MACHINE (Two Needle)	BROTHER	0	0	3	3
4	F/L (Manual Cylinder bed)	PEGUSUS	0	7	4	11
5	F/L (Auto Cylinder bed)	PEGUSUS	13	12	48	73
6	F/L (Flat bed Auto)	PEGUSUS	0	0	16	16
7	F/L (Flat bed Binding Auto)	PEGUSUS	12	11	3	26
8	F/L (Rawedge cutter Auto JHEM	PEGUSUS	5	6	5	16
9	F/L (Small cylinder Auto)	PEGUSUS	2	4	2	8
10	F/L Flat bed double chsin stc.(Back tape)	PEGUSUS	0	0	3	3
11	PMD	KANSAI	0	0	3	3
12	PECOTING	KANSAI	0	1	3	4
13	SCALLOP STITCH	KANSAI	0	0	2	2
14	SMOKING	SHIRUBA	0	0	3	3
15	BARTAC MACHINE	BROTHER	1	2	2	5
16	BUTTON STITCH	BROTHER	3	5	3	11
17	BUTTON HOLE	BROTHER	1	5	5	11
18	FEED OF THE ARM	BROTHER	1	0	0	1
19	BLIND STITCH	BROTHER	0	0	2	2
20	RIB CUTTER	UZU	2	0	4	6
21	YKK SNAP BUTTON	YKK	2	4	0	6
22	UZU SNAP BUTTON	UZU	0	0	0	0
23	HEAT PRESS MACHINE	UNISUM	1	4	1	6
24	BUTTON PULL TEST MACHINE	SAFGUAD	1	0	0	1
25	CUTTING MACHINE(manual)	KM	3	2	0	5
26	AUTO CUTTER MACHINE	KURIS	0	1	1	2
27	PLOTTER MACHINE	KURIS/WIN	2	0	0	2
28	AUTO PATTERN CUTTER MACHINE	WINDA	1	0	0	1
29	FABRIC RELAXATION MACHINE	WINDA	0	1	1	2
30	RE-CONE MACHINE(Thread)	UZU	0	0	1	1
31	METAL DITECTOR MACHINE	HASIMA	1	1	1	3
32	THREAD SUCKER	UZU	1	1	1	3
	FLOOR TOTAL		251	246	347	
	TOTAL		844			

Machine Setup (Dyeing)

SL	MACHINE NAME	BRAND	TYPE	COUNTRY OF ORIGIN	UNIT
1	DMS-11 HT Jumbo Jet Flow Full Auto 15KG	Dilmenler	High Temperature & High Pressure	Turkey	1
2	DMS-11 HT Jumbo Jet Flow Full Auto 50KG	Dilmenler	High Temperature & High Pressure	Turkey	1
3	DMS-11 HT Jumbo Jet Flow Full Auto 225KG	Dilmenler	High Temperature & High Pressure	Turkey	1
4	DMS-11 HT Jumbo Jet Flow Full Auto 450KG ATM	Dilmenler	High Temperature & High Pressure	Turkey	1
5	DMS-11 HT Jumbo Jet Flow Full Auto 900KG ATM	Dilmenler	High Temperature & High Pressure	Turkey	1
6	DMS-11 HT Jumbo Jet Flow Full Auto 1350KG	Dilmenler	High Temperature & High Pressure	Turkey	1
7	Tong Geng A/T 1200kg	Tong Geng	Atmospheric Temp. & Pressure	Taiwan	1
8	HT Soft Flow Capacity:25Kg	J & X	High Temperature & High Pressure	China	1
9	HT Soft Flow Capacity:100Kg	J & X	High Temperature & High Pressure	China	1
10	HT Soft Flow Capacity:10Kg	J & X	High Temperature & High Pressure	China	1
11	HT, Fabric Dyeing- 750 KG	Sclavos Athena-2	High Temperature & High Pressure	Greece	1
12	HT, Fabric Dyeing- 1000 KG	Sclavos Athena-2	High Temperature & High Pressure	Greece	1



Machine Setup (Finishing)

SL No.	MACHINE NAME	BRAND	TYPE	COUNTRY OF ORIGIN	UNIT	REMARKS
1	Stenter	Dilmenler	7 Chamber with Setex 848PLC Control, Dogul 4 Positive Feeding, Bianco Digitex 6 Weft Straighter, Phennenburg Colling System for Control Unit, Maxon Burner ETC	Turkey with All German, Italian & US Parts	1	7 Chamber with the capacity of 7000kg finished fabric & 3000kg Heat Set.
2	Bianco Tension Less Slitting	Bianco	Head, Detwister, Basket, Conveyer Belt & Double Padder	Italy	1	With the Capacity of 90 Meter /Min that is more or less 24000kg of 180gsm 30" dia
3	DMS Slitting	Dilmenler	Head, Detwister, Basket from Bianco, Padder from Rollin	Turkey	1	With the Capacity of 90 Meter/Min that is more or less 24000kg of 180gsm 30"dia
4	Stitching Machine	Tuana Makina	Edge Sewing from Cutter, Italy with D-Threading	Turkey with Italian Parts	1	42Meter/Min
5	Dryer	Dilmenler	2Chamber 2Pass Relaxed Dryer for Open width Fabric	Turkey	1	400lt/hr evaporation capacity that is 8000kg/Day
6	Open Width Compactor	Ferraro	Open width Compactor Ferraro Revolution 3000, with 9.6Meter Pin Frame, Low Rise Positive Feeding, Steamer through 2 steam box, Compaction Zone & Polishing Device.	Italy	1	10000 kg

Machine Setup (Others)

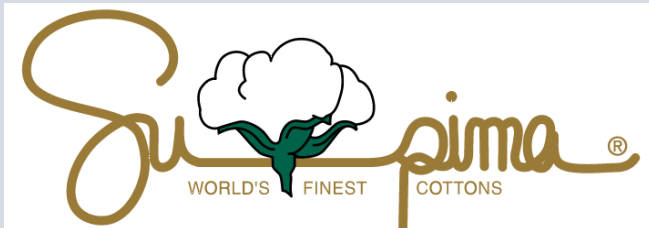
SI No.	MACHINE TYPE	FUNCTION	M/C CAPACITY	BRAND	COUNTRY OF ORIGIN
1	Gas Generator	Produce Electricity	1330 KVA/ 1067 KW	GE Jenbechar	Austria
2	Diesel Generator	Produce Electricity	100 KVA/ 80 KW	Cummins	India
3	Boiler	Strem	8 Tons	Shallmax	India
4	Air Compressor 03 Nos	Air	8.6 & 2.5m3/ minX2	Dalgakiran	Turkey
5	Sub Mersible Pump 02 nos	Water Sub mersible	120 m3/ h	Paragon	USA
6	Cold Boster Pump 03 nos	Water Supply	110-115 m3/ h	Paragon	USA
7	Cold Centrifugal Pump 02 nos	Water Supply	110-115 m3/ h	Paragon	USA
8	Hot Boster pump 02 nos	Hot Water Supply	110-115 m3/ h	Paragon	USA
9	WTP	Refailing Water	120 m3/ h	IE-Hsing	Taiwan
10	ETP	Sleas	80 m3/ h	IE-Hsing	Taiwan



CSR & Sustainability Information

SN	CSR	Sustainability
1	HER Project (Women health project)	Rain water harvesting: As a part of natural resource optimization, we are using latest technologies to hold and preserve rain water and facilitated our production houses rooftop with such technologies to reduce pressure on dependence of underground water. As we can hold around 250000 litre/day of water with our current facilities which we are using for our dyeing process.
2	WE Women by Lindex (Women empowerment project)	Dyeing water used as flush water in toilet
3	Cloud-based preventive health care service: We have facilitated for our manpower health and wellness services utilizing smart medical technologies integrated in smartphone application to monitor health regularly. CMED Health Ltd. has enabled this cloud-based preventive health care service for all staff and worker of APS GROUP. Through this service everyone will get a facility of having access to a CMED app and through CMED app can access their health record from their own account and use it while consulting doctor.	Survo motor installation in sewing machine
4		In sewing LED light installation
5		Cleaner production (Water pact program)
6		Global Sustainable process (Blue sign chemical process)
7		Redundant energy sourcing from Solar panel.
8		Condensate and cooling water recovery from boiler.

Certifications



MEMBERSHIPS & AFFILIATIONS



Bangladesh Garments Manufacturers & Exporters Association (BGMEA)



Bangladesh Knitwear Manufacturers & Exporters Association (BKMEA)



Bangladesh Textile Mills Association (BTMA)



Board of Trustees Member of CSR Centre Bangladesh



www.aps-group.org